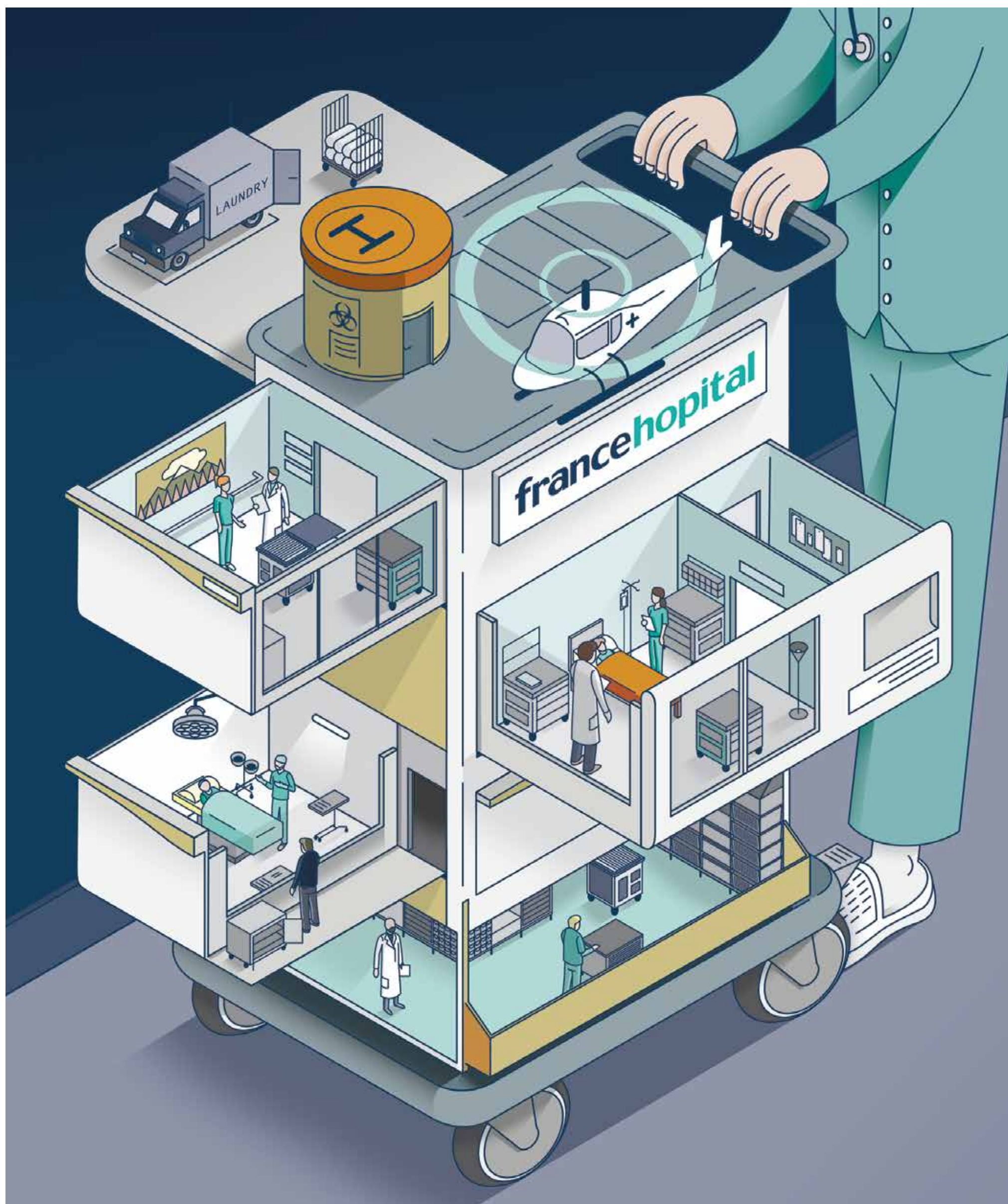


fh

trolleys for healthcare

spotlight

©2018 FRANCEHOPITAL SAS • a magazine on culture and ideas for the healthcare world • francehopital.com



30 years of activity and 70 years of history

70 years of history

1948

Hospital kitchen equipment

1964

Introduction of a new laundry-handling system (LHS)

1972

Kitchen equipment and washing machines
Distribution of shelving and carts

1980

Development of **PERSOCAR** ward trolleys and **PERSOFARM** drug distribution system

1983

Development of **PERSOLIFE** the emergency trolley

1988

In France **francehopital** is founded

1990

Development and production of custom-made stainless steel furniture for clean rooms

1997

First ISO 9001 certificate
Production of **WALLY** the new waste container with knee opening

1998

Development of **ISEO** line of laundry trolleys and **PERMODUL** a modular system for carts and shelves

Development of the **CLIPPER** waste bin

2007

EVOLIGHT and **COLORLIGHT** multifunction trolleys with rolling shutter, drawers or doors

2008

ERGODOC patient files trolley and **SHANGO** multifunction trolleys with laptop computer drawer

2011

OP-LINE: a complete range of items in stainless steel for operating theatres

2012

Presentation of **PRECISO** the innovative ward trolley system

2015

PERSOCAR and **PERSOLIFE** re-designed

2017

Export reaches **more than 80 countries in the world**

2018

Design and development of smart solutions

Europe lies in ruins after World War 2. Julius Peroni needs means for taking care of his family with 4 kids, and in 1948 starts a small trading business in Bolzano. It initially supplies kitchen furnishings to hotels and communities, but quickly moves to hospital kitchens. In the 60's his son Günther takes the lead. He quickly changes business model: **the company stops looking for markets for existing products and concentrates in analyzing logistics needs of hospitals.** This is how "tailor made" trolleys for various hospital settings and tasks are born. Single clever inventions stem from the same analysis. And this model continues to this date: for us it is an ongoing **struggle to develop, refine and improve products...** now and then inventing something from scratch. Gunnar, the

third generation, is at the helm since 2005: he capitalizes on achievements and mistakes of the past, all the **history** and **experience** of his grandfather, his father and the valuable colleagues who have followed one another and brings everything up to date in the new millennium, also having the courage to radically change some things. We are all very proud of our **"made in Italy"** products and philosophy: from concept and design to assembly and shipment. In 70 years, we evolved from a small trading business to a company that produces complex items for a very demanding market and discerning clients. But we never forget, not for an instant, where we came from and how hard this journey was.





Appreciated worldwide

Francehopital always had a vocation for export, both because of geographical position and its culture: our company is located in **Alsace, France** and **South Tyrol, Italy**. Francehopital has a rich and varied production, depending on functionality: from trolleys for personalized medication distribution to those for linen change in the wards; trolleys for operating rooms, for practices, for emergency rooms...

it is a lineup that keeps growing to this day, adding new models and **innovative solutions**. For us the value of excellence comes also from the ability to listen to all needs of accuracy and efficiency coming from hospital wards, the practical needs of our clients and, most of all, the needs of single physicians, nurses and technicians from all countries that are going to use our products.



We had a party!

In September 2018 we put 2 anniversaries together and had a company wide special event.

We celebrated Francehopital's 30 years and 70 years of history and experience in the best way possible: 2 days of relax, fun and activities in Ahrntal, a beautiful valley in our beautiful South Tyrol.

All together: the colleagues from the Italian branches of Lana-Bolzano, Brescia and the French office in Erstein-Strasbourg.

It was a great opportunity to chat and make fun (with all the silly clichés between French and Italians), immerse ourselves in nature and see magnificent views, have fun with group activities and eat well. We went up (by cable car!) to the Speikboden and the Klausberg, we hiked along the Ahr creek and some of us overcame some fear at the Enzswaldle high ropes course.

This small but all important event perfectly complements our **"first 70 years"**, and will provide memories, puns and closeness between colleagues for years to come.

On other page:

Head office
Strasbourg, France

Italian office
Bolzano

Logistics centre
Brescia, Italy

fh spotlight
institute for healthspace

1 • 2019

p.4
South Tyrol: not only speck and Knödel

p. 8-9
C2C or Cradle to Cradle 100% recyclable

p.10-11
Let's tackle infection control!

p.14
presto: "less is more"

p.15
We move contents

Solidarity projects

Francehopital is among the “friend companies”

The NEMO **Clinical Centre in Milan (NEuroMuscular Omnicentre)** is a highly specialized centre, created to respond to those affected by diseases such as ALS, SMA and muscular dystrophies. The main aim is to improve the quality of life of the patients taken care of, while also providing support and assistance to their families.

Francehopital firmly believes in the value of centres like this and has decided to give a tangible hand by donating some trolleys of the PERSOCAR series. Francehopital is now listed among the “friend companies” of the centre.

Ali Daum: Cardioinfantil & Emergency

Francehopital got in touch with a small non for profit organization that was put up in memory of Alexander “Ali” Daum. It helps with much needed hardware, and it helps people who help other people in need.

Francehopital contributed two trolleys to two different projects.

- Fundacion **Cardioinfantil of Bogotá, Colombia** received a much needed PRECISO medication distribution trolley.
- Shortly after that we delivered a PERSOLIFE emergency trolley to **Emergency’s cardio surgery “Salam Centre”**. This centre, the only of this type in whole Africa, is located in Soba, some 20km from Khartoum, Sudan.

More info on NEMO under:
www.centrocliconemo.it



More info:
www.alexander-daum.org.
www.cardioinfantil.org
www.salamcentre.emergency.it



PERSOCAR in its most requested configuration as a therapy trolley (Mod. P40W4)



South Tyrol: not only speck and Knödel

Our story begins in **South Tyrol** and Francehopital’s Italian headquarter is in this interesting land. We like living here: for the **climate**, for its **scenery**, for its **food**, for its **multicultural**ity, for its being Italy’s periphery in the heart of Europe, for being a bridge between Mediterranean fantasy and Nordic austerity, for being a land of tourism and a land of strong export.

South Tyrol was part of the Austro-Hungarian Empire until the end of World War I. It then endured forced Italianization during the fascist regime. From a past of turmoil and social as well as linguistic suffering and struggle, both for the Italian and the German speaking population, South Tyrol is now firmly on a path of openness, coexistence and dialogue. Our region now has three official languages: Italian, German and Ladin.

The French headquarters is in Strasbourg, capital of Alsace. Also Alsace has always been a border land, continuously under cultural influx or direct domination from either France or Germany. French is the official language, but some 40% of the population commonly uses the Alsatian dialect, a German dialect. It is fairly easy to use current German in Alsace.

Let’s move to the table and discover one of the favorite dishes of the central Alpine region: the Speckknödel, or bacon dumplings. You find them homemade or in supermarkets, but the Speckknödel probably started out as a way to recycle: use bread that had gone stale and avoid wasting it.

Try to make them yourself by following our recipe.



We are the winners!

Winning important regional public tenders is a meaningful acknowledgment to our vision: competence, specialization, excellence and personalization.

We stayed true to our nature, we kept developing our products in the best way possible, we did not follow trends or our competitors; instead we created our own area in which we are leaders. **Trolleys for healthcare** has been our motto for the last years, **the Italian trolley** by definition.

Winning the public tenders (**ARCA, ESTAR, ARS** in Italy; **UGAP** in France) is a confirmation for us that we made an excellent job!



The Knödel

Ingredients

(for 4 people):

- 150 grams of stale bread
- 80 grams of smoked bacon (Speck) cut in small cubes
- 1/2 onion
- 20 grams of molten butter
- 2 eggs
- 100 ml of water or milk
- some tablespoons of chopped parsley and chives
- Salt
- 40 grams of flour

Cut the bread into small cubes/crumbs and place in a bowl. Cube the bacon small. Peel and chop the onion finely: sauté in butter until the onions become translucent. Take onions off the pan and mix them with the bread crumbs. Set aside, will be used later.

Beat the eggs and milk together: add to the bread mixture with the rest of the parsley. Sprinkle in the flour, season with salt and mix well to blend all the ingredients. (Many veteran dumpling-makers will insist that the best way to do this is with the hands.) Allow to rest for 15/20 minutes.

Bring to a boil at least three quarts / liters of salted water. Reduce to a simmer. With your hands, form the dumpling mixture into six balls; also use a spoon when forming the balls: the skin gets smoother and you might avoid braking the dumplings during cooking. Add gently to the boiling water and cook for approximately 15/20 minutes (according to the dumplings' size).

Serve beside a hearty stew, or in a clear soup or hot broth or with some salad. Leftover knödel are often served as an appetizer -- cold, in slices, with a hot meat sauce poured over.

Sponsorship of the film "Al Dio Ignoto" To The Unknown God

FH is among the sponsors of the film **"Al Dio Ignoto" (To The Unknown God)**.

Director Rodolfo Bisatti addresses a social issue that is very important to us, and that is still too often dealt with in a nebulous way, almost with silence.

The film, scheduled for release in 2019, deals with the end of life, palliative care and the grieving process.

In the director's words:

"... On a 'Hic et Nunc' point of view, death is not an ancient memory nor the end of everything, it is a dimension that continuously affects life..."



We invite you to visit the film's website: it is a theme that deserves to be explored and addressed with serenity.

www.aldioignoto.com

When details make a difference

Attention to detail, even the tiniest, is carved in our DNA. We spent so many years conceiving, designing and improving our products... and we still get the “wow effect” when we look at certain solutions and features.

We are perfectly aware of the difference these details can make on users in their daily life: **in the end this is exactly why we implemented them!**

The users of our products are used to these details, but we think that a reminder on why they are there, maybe the story behind a detail, increases the value of an object.

Maybe it reminds of certain practices that are now taken for granted. Perhaps it also helps to realize that lately something has been forgotten, lost in the routine or in the hectic activities of a particularly heavy day.

To give just a very practical example: how often do we switch a light on? We give for granted that a light switch works and is safe, but... do we really know what lies behind it? Do we know certain tiny details that make one solution better than another? We'll try to do just that.

FOLLOW US:
francehopital.com

The load capacity of our trolleys

One of our drawers has a max load capacity of 45kg. And a trolley like PERSOCAR or PRECISO can easily hold 200kg of cargo... and this is no coincidence.

At Francehopital we have 3 golden rules we follow when creating our products:

- 1 **ease of use,**
- 2 **strength,**
- 3 **durability.**

Good trolleys are built following the same rules that apply to good houses: **strong foundations**. And a trolley's foundation is a perfectly thought and engineered chassis.

With a rock-solid chassis we achieve 2 great advantages: assembly is quick and easy, and the trolley's structure is virtually maintenance free.

This great load capacity of our trolleys matches another important detail we describe in this magazine: the choice of castors/wheels.

Rounded borders and corners

Why make rounded borders? The rim on a worktop is there to **prevent** objects from **falling** or **contain** spilled **liquids**. If the borders of the rim are rounded, this shape perfectly fits the hand doing the cleaning, allowing for decontamination and effective removal of dirt.

Rounded corners, as in bumpers, also make sense: in the case of an impact, the **rounded shape avoids wounds**.

It is all pretty obvious and very simple, but not all producers implement features like these. And quality also comes through details like these.

Inertia and moving heavy loads

Imagine for a moment **moving a trolley** with a combined mass that easily exceeds **100kg** (220 lbs.). Well, this is daily life for nurses, assistants, physicians, pharmacists, logisticians and cleaning personnel. Imagine the effort for starting, braking and turning many times in a day. And each time in all safety and comfort.

The existence and the shape of handles is one important factor, but the **choice of castors is crucial**. Castors with double ball bearing, the possibility of locking the castors during long straight routes or when maneuvering very heavy trolleys/columns in tight spaces is also a key element. Also the tread material plays a big role: it has a profound influence on start, roll and swivel resistance of a trolley. We have measured the force that an operator must apply in order to move one of our trolleys when fully loaded and with the wheels not aligned with the direction to be taken: it varies between 3 and 4.5 kg, therefore very little compared to the mass to be moved; if the directional wheels are installed, this force decreases between 1.2 and 1.7 kg!



PRECISO and TENTE's castors

PRECISO is our **flagship**. It has so many interesting and important features that we gave it a chapter on its own.

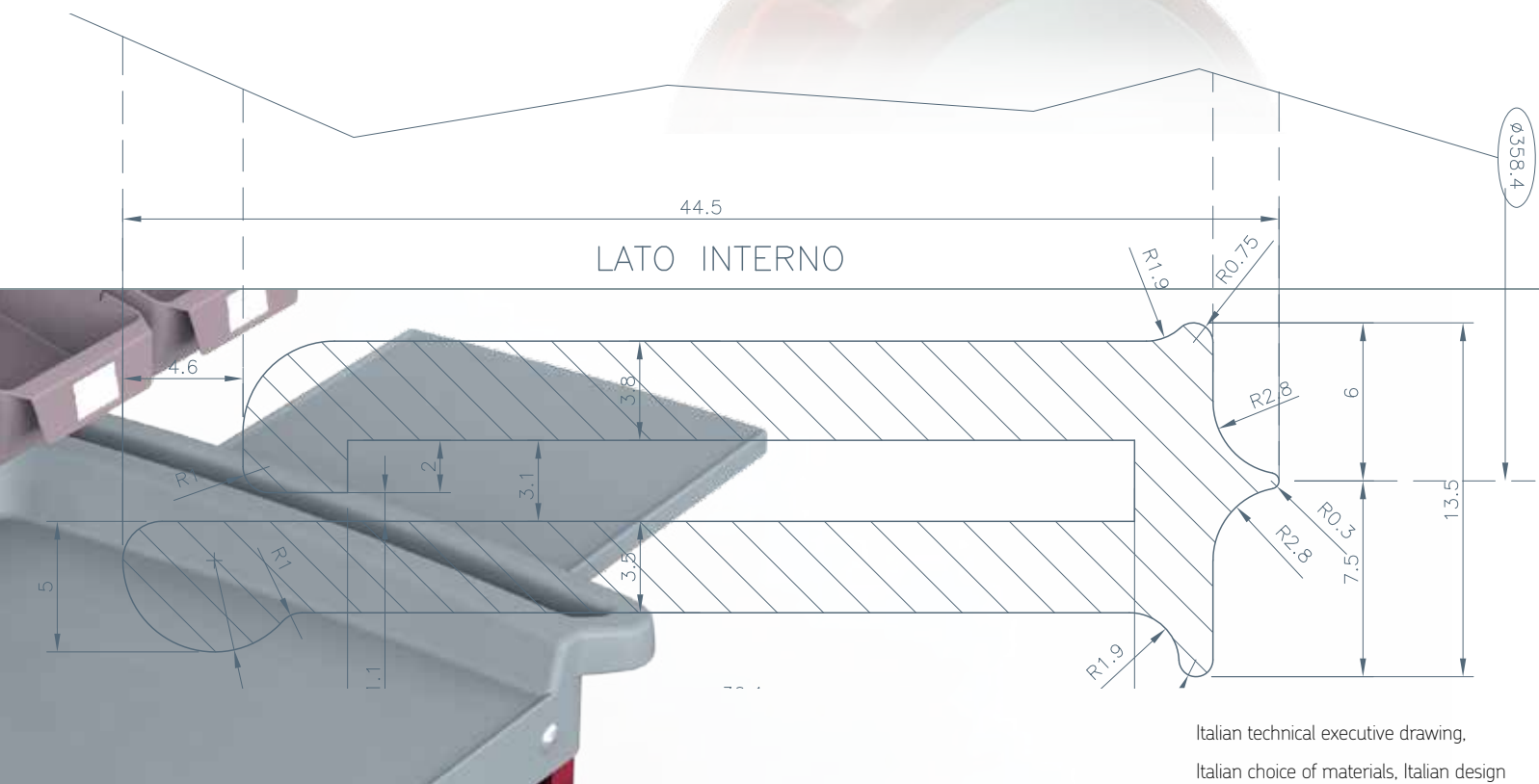
Here we deal with its castors. We had to analyze many products, and the final choice was TENTE. We equipped PRECISO with 4 large twin-wheels of **very high quality**: from ball-bearings to non-marking rubber... all details and features are at the top.

Equip your cart with castors like these and you end up moving a 300kg (a trolley at max capacity) load... in **comfort and style**!

TENTE
BETTER MOBILITY. BETTER LIFE.



FH custom made
twin-wheel castor,
Ø 125 mm with brake
and kick release



Italian technical executive drawing,
Italian choice of materials, Italian design



A fully extendable & transportable drawer, with mauve drawer bins
and adjustable dividers to improve storage and usability

Mauve, mon amour

Malva, in common English, is a **plant** widely used as remedy in natural medicine thanks to its strong soothing and anti-inflammatory properties.

In Italian we use the same name for a **colour**. In English the word is **mauve**.

What colour is it?

It is a pale tint that lays between lilac and lavender.

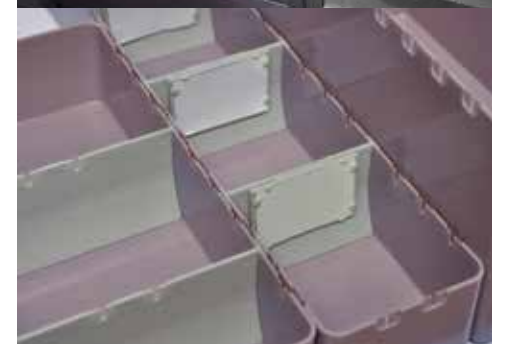
Mauve conveys calm and serenity.

This is why we used this colour in:

- a** the rolling shutters on our **PRECISO** trolleys: both the ward trolleys and the logistic/transport version;
- b** modular bins for better **organization** of drawer contents;
- c** medicine bins for medication supply and patient therapy management.

This colour expresses pure energy: it combines the strength of red's vitality with blue's coziness. Mauve is broadly used in shabby chic furniture"

www.pianetadesign.it



PANTONE®
15-3207 TPG



C2C or Cradle to Cradle

This expression is a play on the famous corporate phrase “from cradle to grave”. But it refers to the design/production cycle, and not to following a customer’s needs for his whole life.

C2C refers to a more ethical approach in production of goods. The core of the philosophy is the highest possible attention to resources consumption and respect for the environment. **C2C processes are sustainable:** from the birth of one generation to birth of the next, the environment and the resources of the planet are passed on. Some call it regenerative design.

The aim is to go beyond a mere produce/recycle logic. Each

production step tries to **avoid depletion of resources** and creation of pollution. It ranges from using energy only from renewables to using plastics that are as recyclable as possible.

As an example: a company producing wooden objects should plant a sapling for each felled tree; or use recycled wood. Production materials are seen as nutrients for the new production that comes when end-of-life is reached. This means that C2C seeks to create systems that are not only efficient but also **essentially waste free.**

Francehopital started some time ago with the choice of materials, first and foremost **aluminum, steel and ABS.**

Stainless steel:
AISI304, 18/10, Ni-Cr...
what a mess!

Steel is something that permeates our lives. We all hear “stainless steel”, we hear acronyms, we touch it every day. The world of healthcare is no exception and we at France-hospital, as trolley and furniture makers, deal with it constantly.

We would like to use this occasion to make a bit of **steel-culture.**

First of all we need a definition: simple steel is an **alloy** of mainly **iron** and **carbon** (never more than 2.06%). The percentage of carbon determines the grading of steel in terms of hardness, ductility etc. Stainless steel contains minimum 11% of **chromium**. Chromium is what gives steel its stainless and inox features.

Inox 18/10 is the most known stainless steel: it contains 18% chromium and 10% nickel and we use daily... cutlery is typically made of inox 18/10.

AISI304 (AISI = American Iron and Steel Institute) is an 18/8 stainless steel. Highly appreciated in healthcare, particularly in OP,

because of its ease of cleaning and excellent hygiene properties.

This is exactly the reason why FH uses it on all products for operating rooms. Good examples are the instrument and the Mayo tables.



Instrument table Mod. CMOP



Mayo table (Mod. CSOP)



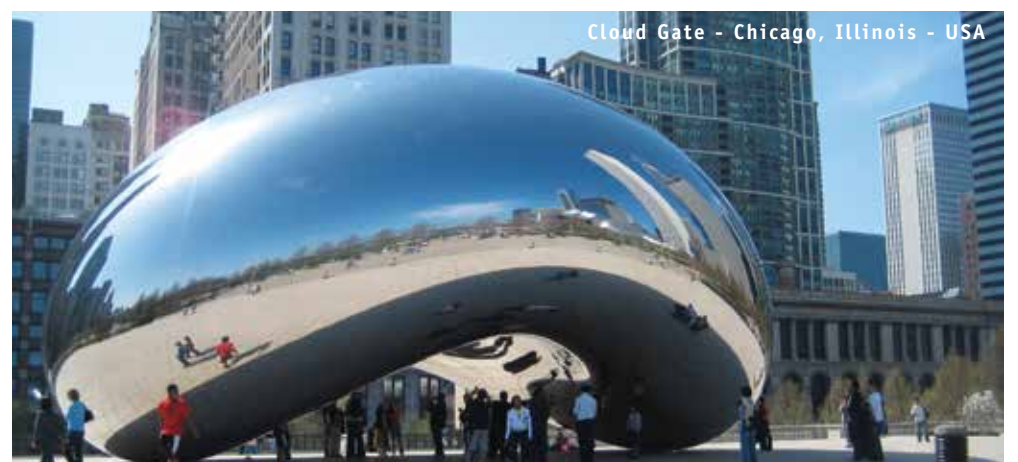
AISI3XX class stainless steels are called “austenitic”. These **austenitic stainless steels** are extensively used in such items as liquified gas tanks, cookware, cutlery, kitchen equipment, beverage and food cans. This same type of steel was used in 1929 for the spire of Chrysler Building in New York City. After almost 90 years from its construction it still shines bright: a great testimony to the **excellent corrosion resistance of this material**.

AISI304 and AISI316 stainless steels

In the whole 3XX series the **AISI304** is the **most used and known**. Resistant to oxidation and corrosion it is not used in saltwater environments. For this type of environment AISI316, also known as marine grade stainless steel, is used.

The famous Gateway Arch in St. Louis, USA is entirely clad in AISI304 stainless steel. After 50 years of exposure to the weather, the first signs of oxidation are only just emerging, due to unforeseen accumulations of water and some poorly executed welds. Cloud Gate is a public sculpture by Indian-born British artist Sir Anish Kapoor, that is the centerpiece of AT&T Plaza at Millennium Park, Chicago, Illinois.

Constructed between 2004 and 2006, the sculpture is nicknamed The Bean because of its shape. Made up of 168 stainless steel plates welded together, its highly polished exterior has no visible seams. It measures 10 by 20 by 13 m, and weighs about 100 t. Kapoor's design was inspired by liquid mercury and the sculpture's surface reflects and distorts the city's skyline. Visitors are able to walk around and under Cloud Gate's 12-foot (3.7 m) high arch. The sculpture is popular with tourists as a photo-taking opportunity for its unique reflective properties.



Let's tackle infection control!

As far back as 1800, the Hungarian doctor Ignác Fülöp Semmelweis said that washing your hands and keeping your hands clean is one of the most important **preventive measures** against the **transmission of bacteria**.

Laundry bags

In laundry management the most critical steps are **collection and sorting of dirty linen**. These are the first steps in the circuit, and also the most hazardous from the point of view of infections: it is a fact that dirty linen is a **potential vehicle for bacteria**.

Collection of dirty linen is made with dedicated trolleys, better if made with an AISI304 stainless steel frame, equipped with bag holders closed by pedal operated lids.

The bags are usually made in different colors in order to easily identify the type of laundry.

To avoid repeated handling of dirty linen, sorting takes place on site: at the patient's bed or in the bathroom, items are placed directly in the right coloured bag. This way the **risk of infection is drastically reduced**.

Laundry can be sorted by type of fabric (wool, cotton, synthetics) and/or by type of linen (blankets, sheets, pillowcases) in agreement with the laundry service.

For over 30 years, FH has been promoting the sorting through the use of **fabric bags** in different colours, 100% polyester, water-repellent, resistant to up to 2500 washes and therefore **reusable** for years and decidedly **more ecological** than those in disposable polyethylene that produce waste.

Another important feature of FH's laundry bags is that they are wrapping. They can be put in the washing machine as they are when they come from the wards: the drum's rotation will open the bag and let out the linen.

Wally

Created by FH in 1997, it is the **original** and **unique** (except for a couple of bad copies) **knee opening waste container**. WALLY helps to keep hands clean, whether they are naked or gloved, and does not force the operator to touch the potentially infected lid whenever something has to be thrown.

Small touches make a product great:

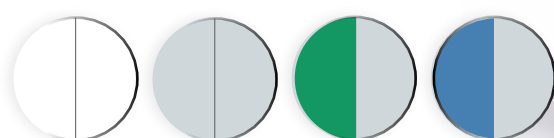
- **Opening the lid with the knee**
- **Presence of the lid to prevent the spread of odours and bacteria**
- **High quality ABS plastic material that can be sanitised**
- **Removable inner bucket for easy emptying and quick washing**
- **Bag retainer flaps to hold the bag securely in place**
- **Colour range for waste sorting**
- **Capacity from 8 to 20 litres for different types of waste**



Pedal operated lid, so as not to touch the contents, and colour for quick sorting



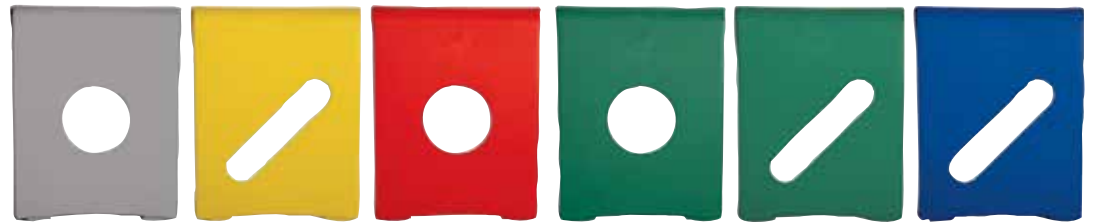
WALLY



WALLY comes in 4 colour combinations



Dirty linen is touched only once when using wrapping bags!



Clipper: a touch of colour in the world of waste collection

Does CLIPPER look like any other dustbin? Maybe, or maybe not. There are many details that make CLIPPER stand out.

The material: **self extinguishing polypropylene** in V2 class. The presence of wheels and a nice and **ergonomic handle**. Smooth surfaces and rounded edges for easy cleaning. Pedal opening, and the lid can be locked open.

A small footprint: 3 CLIPPERS take up less than a metre. And finally those coloured lids, with or without hole: who said that waste collection can't go along with beauty and a touch of colour?



Have you ever heard of "odorous pollution"?

The problems associated with the discomfort caused by bad smells are many, some serious, others less so. But even just opening the waste bag can annoy us or even turn into a potential bacterial inhalation.

What is odour? Odour: any gaseous emanation perceived through the sense of smell (EPA 47/2002, GOAA 1999)

Wasty

WASTY, the bag holder of FH, has a foot-operated bag **opening system** that **sucks** in **clean air** from the outside instead of emitting a bad-smelling, perhaps harmful, whiff when opened.

Moreover, a bag-holder structure, preferably in AISI304 stainless steel such as WASTY, is much more hygienic than closed bins that need to be frequently washed, sterilised and dried to avoid turning them into small "bacteriological bombs".



Sharp objects containers in all sizes

Let's take a little bragging: **we invented these, almost 40 years ago**. Can you imagine hospitals without? They simply didn't exist! The first iteration was a cardboard box, when a common sight were syringes and scalpels protruding from waste bags.

Our R&D patented them in plastic and with a final and **tamper-proof** closure: disposable and imperforable containers with double overlapping shells for the disposal of sharp and cutting waste.

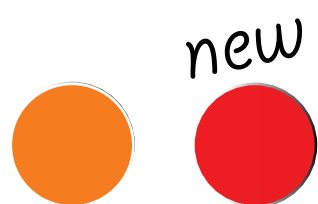
The opening has notches for needle removal. Disposal by incineration emits no harmful gases. Today they are available in a **broad range**: from the wearable POCKET to the ultra large MAGNUM XL (60 litres capacity).

They can be installed on trolleys thanks to a wide range of holders.



emergency trolley persolife

Original design,
unique color,
the best
in case
of emergency



new

Also in red

By definition a medical emergency needs a **quick as possible** response. A fast and **rational access** to items, tools and medications is a critical factor. Spotting the emergency trolley is the first step in the process of dealing with the situation. Our PERSOLIFE trolley has always stood out for its original orange color. We now introduce also a nice flashy red.



download
the PDF brochure



PERSOLIFE comes in 3 sizes:
small, medium and large

Why a numbered seal?

In an emergency situation the efficiency and reliability of the trolley and its contents are essential to save lives.

There can be no doubt to **find the right medicine, correctly stored and not expired**. That's why regular, documented and recorded checks of the trolley, devices and drugs are essential. Each hospital has its own protocols and procedures that accompany this essential operation.

A help with periodic checks, or when resupplying stocks after an intervention, is given by the **safety seal** that locks the drawers.

The intact seal, in addition to avoiding keys and numerical codes (which are not found or forgotten in case of emergency), certifies and shows that the content has been checked and correctly supplied and that the trolley is ready for use.

The unique numbering of the seal makes it possible to record and trace the checks.

The seal is disposable because it cannot be reused: it is made of sufficiently strong plastic, but it can be broken when necessary.

Vials should go in the first drawer

When dealing with emergencies, operators need to be quick! It seems pretty obvious, but there are many ways for making intervention as quick as possible. Having **medications and tools at hand** is one.

Certain lifesaving medications (adrenalin or dopamine, for example) come in single use vials. These vials need to be **quickly accessible for fast injection**.

Equipping the first drawer at the top of the trolley with vial trays serves precisely to increase the speed of intervention.



An emergency cart is used to deal with **critical situations** such as a cardiac arrest, and is available in all wards, except usually first aid and intensive care which are already organized for all types of emergencies.

The trolley must contain the so-called life-saving drugs as well as a defibrillator, Ambu bag, small oxygen bottle, cardiac massage plate, IV pole and suction pump and **must allow the staff (doctors and nurses) to use it as a mobile station**.

An emergency situation requires rapid action, and finding what is needed immediately is essential.

Compactness, super organization, ergonomics and excellent mobility are some of the indispensable features of this trolley.

Just like fire extinguishers, the emergency trolley has its own pre-established and marked position within the ward, easily and quickly accessible and known by all the staff and requires a striking and distinctive colour such as orange or red.

A careful choice of this trolley is a must: its purpose is to **increase the efficiency** and effectiveness of the intervention by **increasing the chances of saving someone's life**.

The "safety lock":
a simple gesture to
unlock drawers and
break the seal



3 coloured sides to liven
up the ward!

Our new line of ward
trolleys inspired by the
concept “less is more” (*):
essential and just right
for its functions.

presto “less is more”

(*) **less-is-more:**
this is the famous
assertion by
German Bauhaus’
architect Ludwig
Mies van der
Rohe (1886-
1969); it refers to
architecture: in his
eyes architecture
should stop
looking at luxury
and complexity as
something good;
in the following
decades this has
almost become
a way of life,
**a philosophy
transposed
into design,
technology and
even clothing.**

PRESTO is an Italian word (pronounced as “*prestəu*”) meaning “quick”, “soon”. It is a word taken from musical notation, often used in English and French as a way of saying “immediately”, “said and done”, “soon”, “et voilà”.

PRESTO underlines the benefits of using this line of trolleys in facilitating and speeding up care activities.

PRESTO is suitable for different uses: therapy, medication rounds, anaesthesia.

- **Lightweight thanks to the combination of plastic and aluminum;**
- **manoeuvrable thanks to its premium quality castors;**
- **original thanks to FH’s unique and innovative solution: the transportable drawer;**
- **flexible thanks to the many versions, the colours and the broad range of accessories.**

The PRESTO line
is available in 4 colours



White and neutral aluminum grey: simplicity and neutrality; apple-green and sky-blue to reconnect with nature: rebirth, rejuvenation and revitalisation; **blue is for tranquility** and stability, **green is for energy** and recharge.

PRESTO, also thanks to its colours, conveys a sense of reliability and confidence.

PRESTO is available in 4 sizes, according to needs and space:
SMALL, MEDIUM, LARGE and DOUBLE



SMALL mm. 571



MEDIUM mm. 662





write us at
presto@francehopital.com
 to receive all details

We move contents

The unique transportable drawer.

FH reimagines the drawer itself: it is now merged into a tray and creates a new way of working.

When a drawer is empty **why move the whole trolley?** The drawer is compatible with picking-station rails and refilling can be carried out at the central or satellite pharmacy. Full/empty exchange is carried out by just moving the drawer between station and cart.

Francehopital has always distinguished itself for innovative solutions and original ideas.

Francehopital created the original and only drawer that can be transported: **the drawer** rests on a frame that incorporates the telescopic rails and therefore **can be easily and quickly removed**.

Thus:

- it allows the rapid exchange of drawers between trolleys;
- it allows perfect cleaning and sanitizing;
- it ensures a capacity of more than 40 kg;
- it guarantees 110% opening and closing with automatic closure.

The 100% Italian design and construction, the selection of high quality ABS plastic materials, the injection moulding in a single block, the range in three heights (76 mm, 156 mm and 236 mm): these are the details that make the difference and make the daily use of our trolleys a unique experience.



LARGE mm. 855



DOUBLE mm. 1115

preciso

to design by creating uniqueness



PRECISO: how do you pronounce it?

It is Italian, as we are. And it means precise, accurate... detailed. You pronounce it "*pre'fizo*".

And our **top of the line trolley** certainly has a lot of interesting details. Some are design details, but all have an impact on usability, safety and comfort.

Precision, innovation and creativity combined with experience have been the main ingredients in the development of the PRECISO system ... yes, system because PRECISO is not just a trolley.

Precious materials, essential lines, measured volumes that allow the composition of multiple solutions with unique features such as:

- The assembled structure with **corners** and **walls** in **anodized extruded** aluminium; the particular convexity of the side walls gives solidity and sturdiness to the whole trolley.
- The injection-moulded **monobloc drawers** have no screws or edges inside, making cleaning easy and safe and the entire volume usable. The ABS plastic with which the drawers are made guarantees a resistance of up to 70°C, making them dishwasher safe.
- **The transportability of the drawers** allows you to quickly reorganize the contents of the trolleys and to transport materials from warehouse to department, from cabinet to trolley, from trolley to trolley, adapting to all needs. See article We move contents on page 15
- **The sophisticated telescopic rails** allow the drawer to extend by 110%; the output has a differentiated action with load compensation (patented by the German company HÄFELE). The rails are silenced when opening and closing and are equipped with an automatic return system with integrated air damper. These rails make the drawer an excellence.
- **The injection-moulded** ABS plastic **worktop** with the innovative three-sided push handle provides greater manoeuvrability and protects the trolley from possible impacts.
- **The injection-moulded** ABS plastic **base** is also equipped with a perimeter bumper for total safety.



Watch PRECISO-full video presentation
FOLLOW US:

francehopital.com/it/video

Mix & match your trolley

1 Configure → 2 Personalize → 3 Request for quote

- **Immediate results: no limits to your creativity;**
- **On line 24/7: you can use it whenever you want;**
- **Reduction of errors and hesitations: what you buy is what you want.**

PRECISO experience

Undecided on which trolley to buy?

Is the container on the right or on the left more convenient?

Is the trolley better in blue-electric o green-pastel?

Do I need 9 or 20 tilting containers on the overbridge?

Should the column have 5 or 10 ISO trays?

Is it better to have drawers or a front shutter closure?



Use our PRECISO configurator
preciso-enjoy.it/experience.html



PRECISO means multifunction trolleys and logistics/transfer/storage carts in dozens of configurations



Live PRECISO and build your ward or logistics trolley **exactly as you want it** and look at the final result before buying it. PRECISO-experience is available to create and configure your trolley when and how you want.

Evaluate the colours, accessories, configuration of the drawers, the type of closure and much more following your needs ... print the technical data sheet and request a quote in a few seconds!

Easy, intuitive, user-friendly and cross-platform... PRECISO-experience is a **web application**: you can use it on your PC, tablet and smartphone wherever you are. You can download it and use it off-line, you can add the icon to the homepage of your smartphone and also have fun.

p-smart inventory in real time

Investment in better technologies avoids waste of time and provides greater transparency in the use of resources. Being able to **reduce** the **amount** of **time** spent on logistics to dedicate more to clinical aspects is a constant quest in the healthcare field. Mobility solutions improve user experience and support a better clinical workflow. FH, constantly looking for innovative solutions that help the daily work of healthcare operators, presents **p-smart**.



watch the video

ergodoc is a combination of functionality and aesthetics.

It is true that in many hospitals, and the numbers keep increasing, the medical record is computerized and therefore the trolley for the visit becomes a support for a tablet or a laptop, but there are still many requests for a rounds trolley "to carry around the paper files".

With the ward round being one of the most important elements in the daily routine, your team **of doctors and nurses need to be able to work in a productive manner**.

And the paper medical records weigh a lot: together with X-rays and various reports, users can carry around over a hundred kilos.

We are proud to say that we have been the first to invent in 1990, and re-invent recently, a trolley which allows you to **take and replace files from the top-down whilst remaining upright**, providing perfect ergonomics, so there is no need to continuously bend over. The trolley has a spacious upper tank equipped with a frame in two sections where it is possible to hang folders in A4 format or in a larger format, such as X-ray.

During ward rounds a **large working surface** comes in handy: you can have all documents at hand and also take notes: ERGODOC is just perfect for this; in addition ERGODOC has spaces for gloves in different sizes, for a hand sanitizer and also for some tools for daily use.

Fully loaded it can be moved with less than 3 kg of force.

ERGODOC has all this and more...



FOLLOW US:
francehospital.com

Accessories highlight

Drawer bins

Evaluating the **capacity** of a **drawer** and its possible organisation is one of the most important activities when choosing a trolley. Think of the difference in content between an emergency trolley and one for chest surgery, or between a preparation trolley for an adult patient instead of a paediatric patient.

A **wide range of modular** bins can facilitate and simplify these operations.

Bins allow you to optimally divide the materials.

These bins can be easily moved, reorganised, added or removed without having to deal with the entire contents of the drawer. If any liquid were to spill, it would remain inside a single bin and would not oblige you to empty and clean the entire drawer.

The bins are also made of high quality ABS plastic, are dishwasher safe and can withstand temperatures of up to 70°C.

The completion with mobile dividers that can be placed in multiple positions allows to **create compartments** of several sizes depending on the material they must contain, and therefore to optimize the space.

Flexible label holders positioned in several places allow you to have a quick overview on the contents and to go for a fast pick.



Triple horizontal glovebox holder

Vertical boxes and vertical storage, or horizontal boxes and vertical storage... no no, please let's optimize: yes to horizontal boxes, but storage as well! You get it, don't you? Well, this is the glove box holder **most loved by customers**: it carries **3 boxes** (small-medium-large), it is made of plastic-coated steel so as not to have any rough or sharp points and it hangs on the universal bar (*), both on the overbridge or on the side.



SABU system for accessory bar (*)

We have already mentioned the bar, but what for some years now has been a drug for our customers is the ability to "manage the bar for their own use and custom": arrange it in height, remove it, move it from right to left or from cart to cart ... without the use of screwdrivers or the like. How?

With SABU - Universal Bar Hooking System - which fixes the bar to the extruded aluminum corner posts of our trolleys... **how brilliant is that?**



whatch the functionality



WALLY

Yes, it is the most popular waste container thanks to its **knee opening**. With a capacity of 8 or 20 litres, it is now a standard on most hospital trolleys, but it is also hung on the wall of bathrooms, clinics and waiting rooms in various hospitals around the world. Attached to the side bar, two small ones can be installed side by side for waste sorting, or one large one. With its **4 colour combinations**, WALLY adapts to the type of sorting or furnishing style. For further information, please refer to the article #Infection-Control - WALLY on page 10.

Baskets for objects

Much more flexible and multi-purpose than tilt-out bins (these are preferred for distributing syringes and needles), the baskets that hang from the bar are appreciated because they contain material of various sizes such as vials, boxes and cannulae. **The baskets can be moved** from the overbridge to the side bars and, where possible, to the bars of the bedheads, thus acting as small trays.



(*) digression: until a few years ago this bar, called universal or normalized, was called Dräger bar, named after the famous German company Drägerwerk AG & Co. that

introduced it in the '80s; it quickly became a standard. It is almost always an aluminum bar measuring 10x25 mm. As Dräger says, it "increases flexibility and safety at work".



Cart Trends 2019

OK, it is clear now: from China to the US, from Europe to Africa, a demand with common features from healthcare is surfacing:

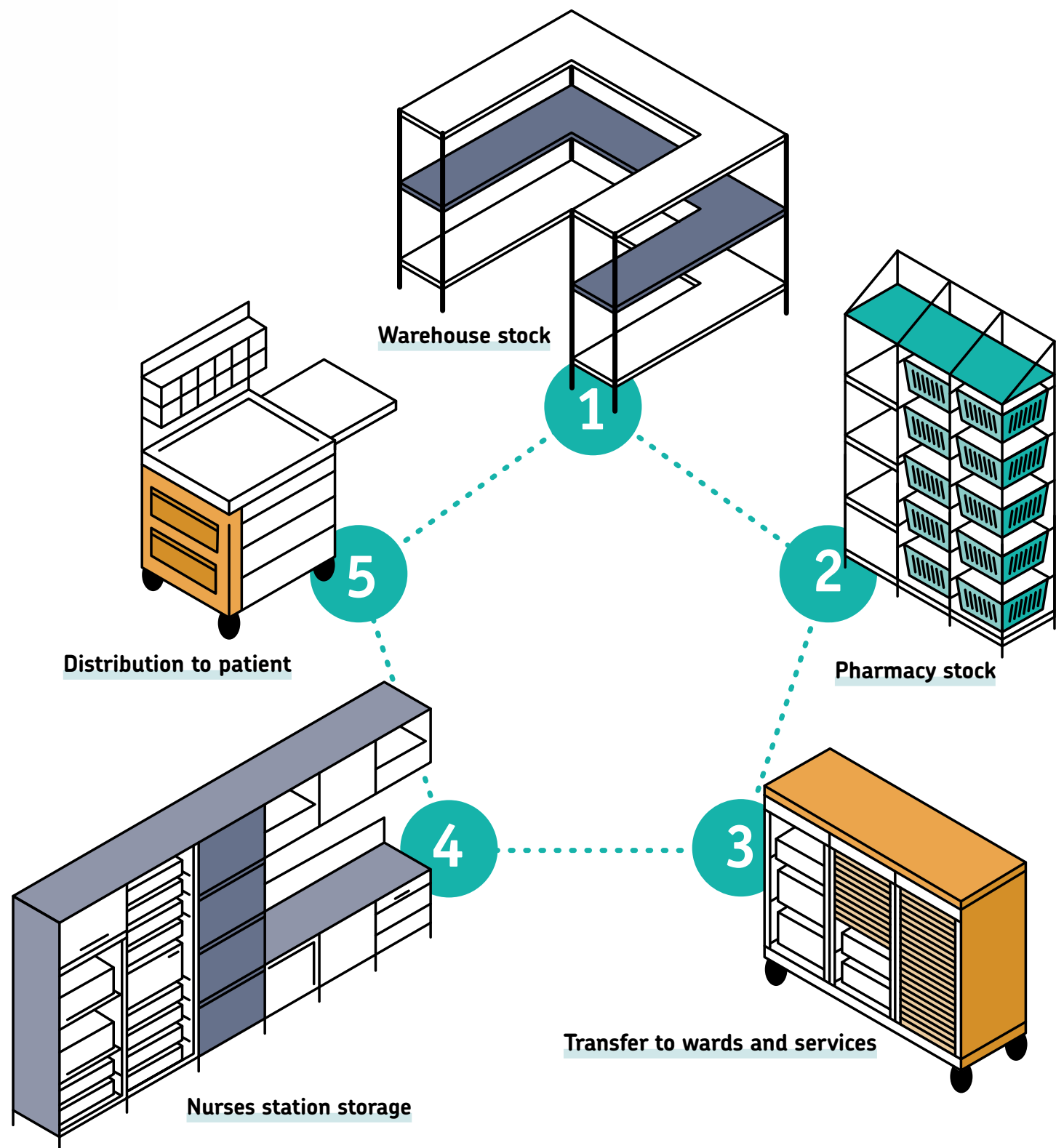
- **minimum footprint and maximum capacity;**
- **modern and light materials as extruded aluminum and ABS plastic (enough with painted steel!);**
- **best quality of drawers and castors.**

Here is the answer from Francehospital, the recognized leader in this market:

- light frame
- minimum footprint
- Angular posts in extruded aluminum
- Single wheel castors, super smooth riding Ø 125 mm
- Side panels in composite materials
- Drawers: monobloc ABS and transportable
- see page 14

Trolleys as essential part of a logistics process

Get in touch with us to obtain a complete project: from storage to distribution.



Plus